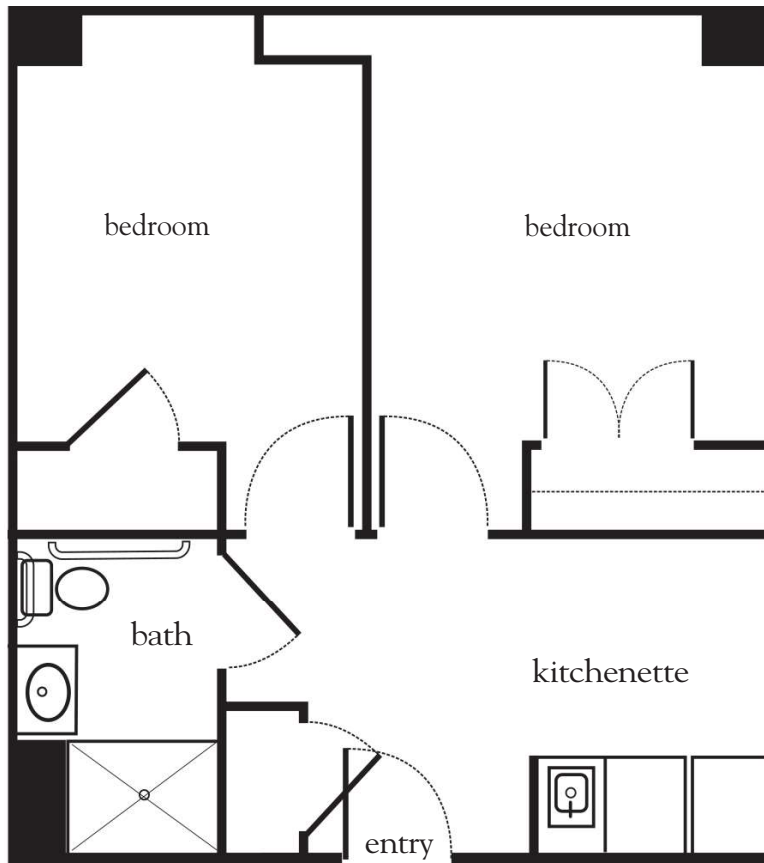


# Assisted Living Shared Suite



Apartment No. \_\_\_\_\_ Square Footage \_\_\_\_\_ Apartment Rate \_\_\_\_\_

Notes \_\_\_\_\_

\_\_\_\_\_

\_\_\_\_\_

\_\_\_\_\_

Date Quoted \_\_\_\_\_ Quoted by \_\_\_\_\_ Rate Expires \_\_\_\_\_

*Atria* MAPLEWOOD PLACE

781.324.4999 | [AtriaMaplewoodPlace.com](http://AtriaMaplewoodPlace.com)

Measurements are an approximation and can vary by apartment.  
All rates are subject to change.

## Rental Rate includes

- 24-hour staff
- Three chef-prepared meals per day
- Daily educational, social, cultural and fitness opportunities
- Housekeeping and linen services
- Scheduled bus and sedan transportation
- Utilities
- Wi-Fi in all common areas
- In-apartment washer and dryer - selected apartments
- Apartment maintenance
- On-site parking lot for residents and guests
- Concierge service
- Individual thermostat control
- Emergency alert system